

KCP34ZX5170



Phone: +1 (305) 888-7404

Fax: +1 (305) 888-1108

Email: cs@riosequipment.com

Address: 8750 NW 93 Street Miami,
Florida 33178



BOOM SPECIFICATIONS

Vertical reach	34.15 M	(112' 1")
Horizontal reach	30.5 M	(100' 1")
Reach from front of truck	26.7 M	(87' 7")
Unfolding height	6.98 M	(22' 11")
Section articulation	92° / 180° / 225° / 180° / 245°	
Rotation	370°	
Delivery line	125mm	(5")
Proportional boom	Yes	
End hose length	4 M	(13')
Outrigger spread-front	5.6M	(18' 5")
Outrigger spread-rear	6.77 M	(22' 3")
Max. outrigger weight	20,500 kg	(35274 lbs)

PUMP SPECIFICATIONS

Maximum output	170 m ³ /h	(222 yd ³ /h)
Concrete cylinder	Ø230 x 2100mm (9" x 83")	
Stroke per minute	32	
Concrete pressure	69bar	(1000 psi)
Hopper capacity	0.6 m ³	(21 ft ³)
S-tube	Ø230 x Ø180 (9" x 7") Big Mouth	
Hydraulic pump	Rexroth AIVO260	
Cycling system	Hydraulic with manual overrides	
Max aggregate size	40 mm	(1 1/2")
Water Tank Volume	450L	118.9 Gal

* Maximum theoretical values listed.

*Dimension will vary with different truck makes, models and specifications.

*Right to make technical amendments reserved.

TRUCK MOUNTED SPECIFICATIONS

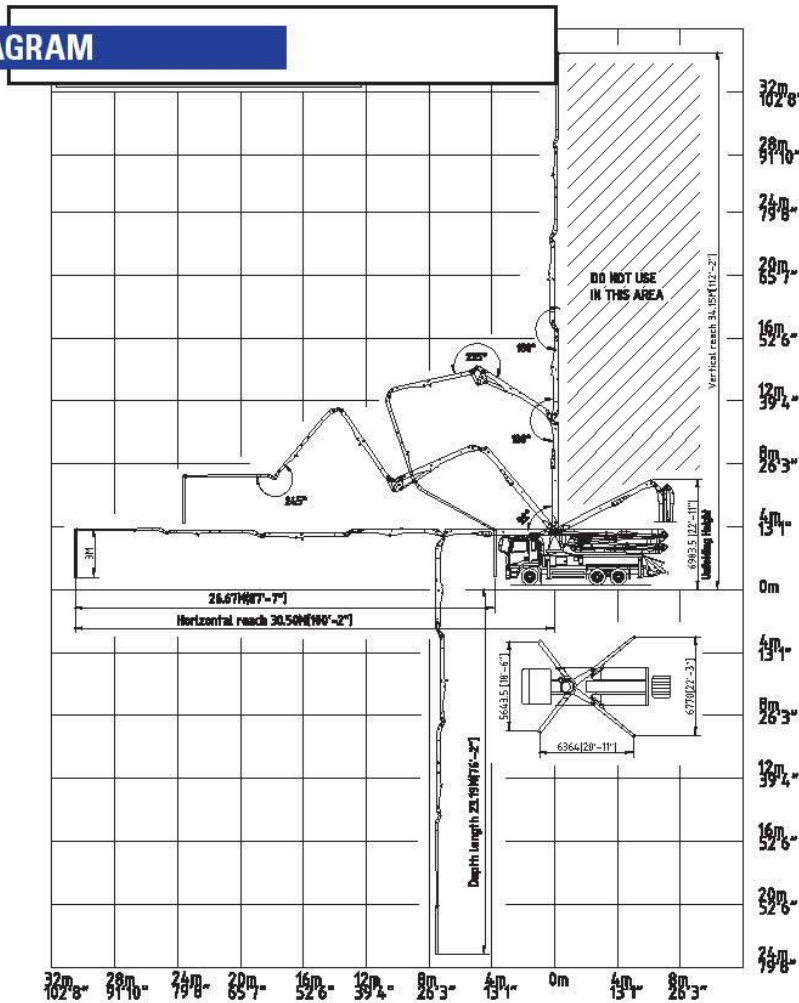
Available: MR MACK, GRANITE MACK, PETERBILT, INTERNATIONAL, FREIGHTLINER.

RIO'S EQUIPMENT

WE EXPORT QUALITY - EXCELLENT SERVICE - GREAT PRICES

www.riosconcretemixer.com

WORKING DIAGRAM



WEIGHT DIAGRAMS

*Photos and drawings are for illustrative purpose only.
 *Dimension will vary with different truck makers, models and specifications.
 *Right to make technical amendments reserved.

